

MS FCO Powder Booth System

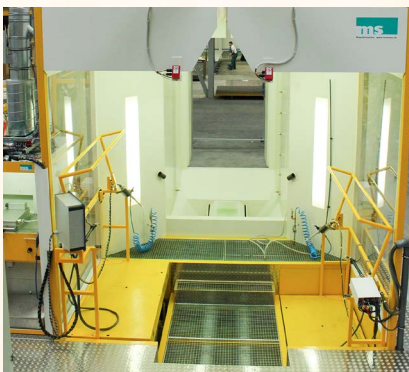
Efficiency and Reliability
in Powder Coating
Technology



MS Powder Systems are successfully implemented through-out the world providing end users with the latest in fast color change booth system technology.

An ever increasing variety of colors and products, combined with smaller production batch sizes, requires an ever greater degree of flexibility in powder coating booth system designs. With the latest MS Quick color change concepts, the booth enclosure, powder kitchen, powder circulation, recovery, application equipment and control technology are all optimally coordinated harmoniously through a user friendly PLC operating system. The concept results in a particularly advantageous cost to use ratio and fast amortization.

An FCO powder coating booth system design features large and well-lit walk-in manual coating touch-up stations. Powder can not accumulate on the floor as the entire area is properly ventilated through a grated exhaust system.



MS FCO (Fast Color Change / Open Booth) quick color change powder coating system



MS FCO Powder Booth System



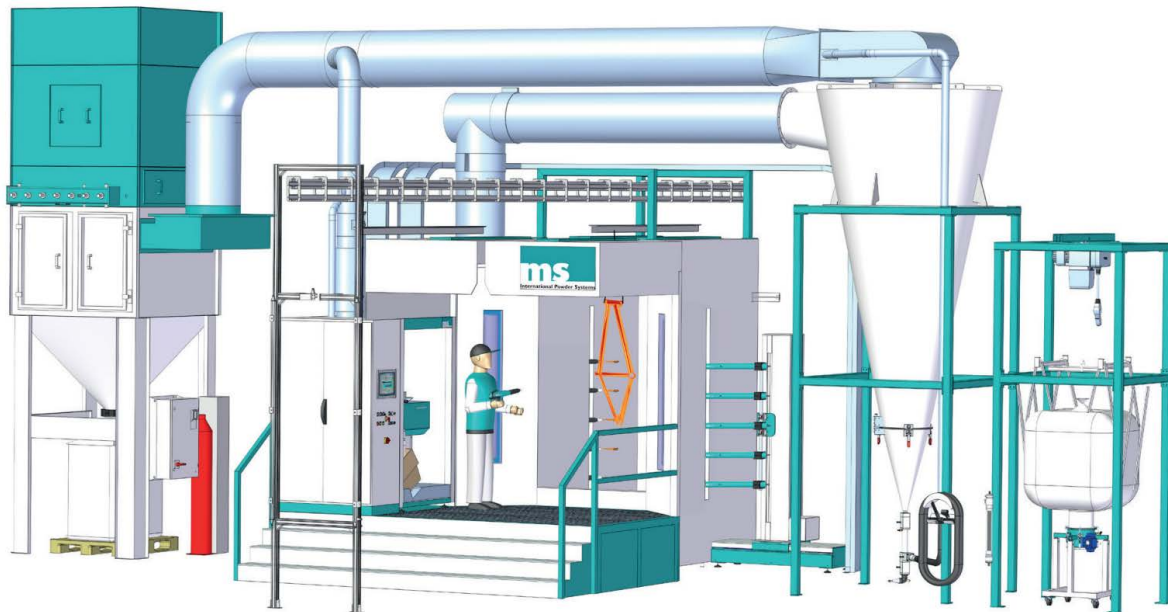
Manual coating area with integrated scissor lift tables.



Automated coating with combination X-Y-Z axis controls.



Flexible powder coating of flat and / or large workpieces.



MS Model FCO Booth Features

Increased productivity, color change in *six-minutes, or less in full recovery mode.

*Note : It depends on the color to be changed, the size of the booth, and the level of skill of the workers.

Improved application efficiency, due to MS double wall PVC sandwich cabin booth construction.

Increased over-all powder system efficiency due to unique self-cleaning MS cyclone design, up to 97%.

Minimal use of powder coating material in circulation at any given time, with optimum amount of material in circulation, due to sophisticated PLC control sensors being utilized.

Walk-in booth design for manual coating area, with exhaust extraction and grating for pre- and / or post-coating operations.

Small foot-print of automatic section improves efficiency and time of automated booth enclosure clean-up.

Quiet operation, typically less than 80-dba.

ms[®]

CFT Ransburg Japan KK

15-5, Fukuura 1-chome, Kanazawa-ku, Yokohama, Kanagawa Japan 236-0004
TEL : +81-45-785-6421 / FAX : +81-45-785-6517

<http://www.carlisleleft.co.jp/>

©MS and Ransburg are a registered trademark of Carlisle Fluid Technologies.

For more information, please contact: